

ADM1TE DIN Rail Series Single Phase MID Approved

Introduction

The ADM1TE series are a 18mm wide electricity meter which is able to measure up to 30A. The ADM1TE is available in 4 different types. All meters are available for 120V or 230V and for 50Hz or 60Hz.

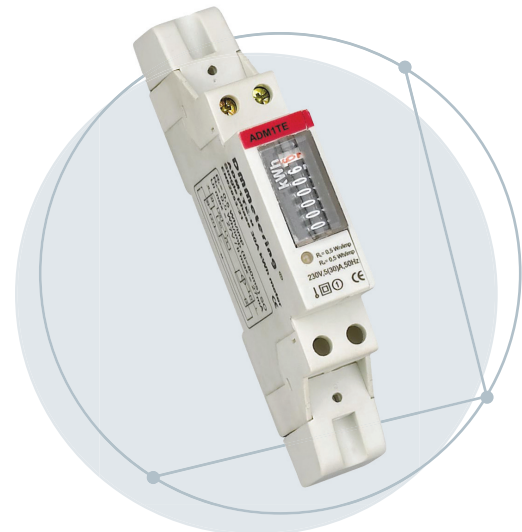
An MID approval is obtained for the ADM1TE with 6+1 motorstep counter. With this approval it is allowed to use the meter for billing purposes throughout Europe.

Functions and features

- ADM1TE Register. Contains a 6+1 motorstep counter and is MID, KEMA and CSA approved.
- ADM1LCD version 1. Contains an LCD display.
- ADM1LCD version 2. Contains an LCD display with possibility to connect an external voltage to read out the meter when there is no power.
- ADM1LCD version 3. Contains an LCD display with backlight and build in battery to read out the meter when there is no power.

Technical specifications

Voltage	127 / 230V AC (-15%+10%)
Frequency	50Hz or 60Hz ($\pm 10\%$)
Current	5(20), 5(25), 5(30), 5(23)A
Power consumption	< 0,6W
AC voltage withstand	2KV for 1 minute
SO Output	SO according to DIN43864
Temperature range	-25°C ~ +55°C
Case	1 module DIN rail
Dimensions (wxhxd)	18x90x58,5mm without protection cover
Accuracy class	1 or 2
Packaging dimension	32x22x29.5cm - 12kgs (100pcs/ctn)



ADM1TE-s

Outline dimension

